

Well 10 – Brunswick basalt of the Watchung zone overlying Brunswick upper red zone

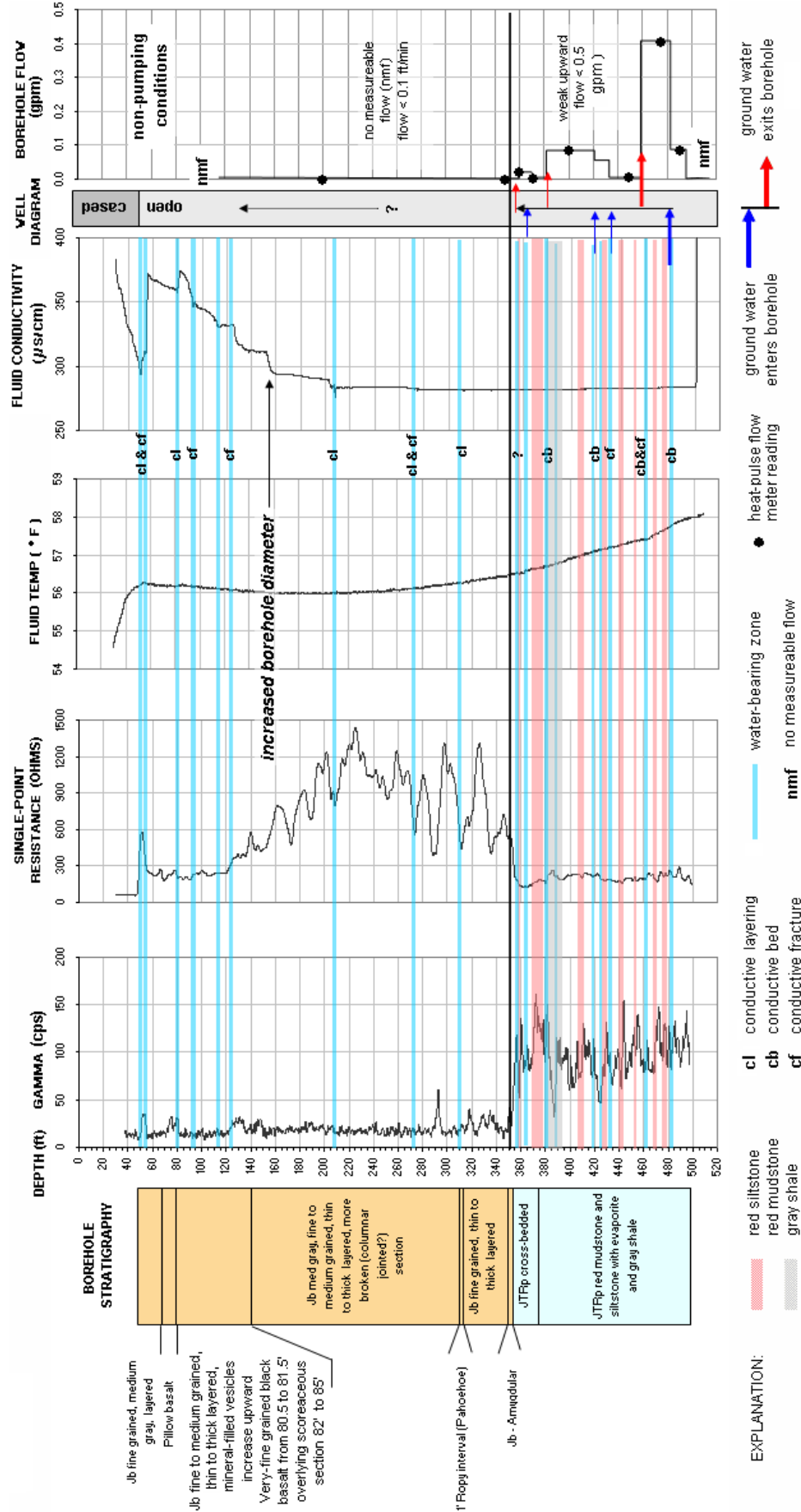


FIGURE 1E7. Stratigraphic and hydrogeologic sections based on interpretation of geophysical logs for well 10 showing the vertical distribution and types of hydraulically-conductive features and water-bearing zones in basalt, red mudstone and siltstone and gray sandstone. Depth values are in feet below land surface.